

# Qube Quartz

Minimalist style

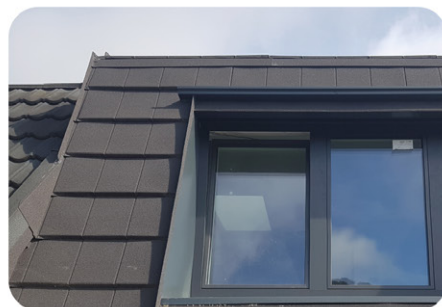
**Metrotile**<sup>®</sup>  
worldwide roofing systems



## Lightweight

approx. 1/7 of the weight  
of traditional heavy tiles

Ebony



## Storm-proof

withstand high winds,  
cyclones even  
hurricanes



## Aesthetics

the beauty throughout  
the entire product  
lifespan



## Accessories

everything needed  
for a start-to-finish  
roof installation

# Qube Quartz

Minimalist style

**Qube Quartz offers a sleek profile with clean, straight lines and sound insulation for houses on modern architecture's frontier.**

Lightweight and exquisite, Qube roof tiles provide advanced all-weather protection. Your roof doesn't just look secure; it truly is. For use in loft living spaces, Qube has a special sound-insulating layer which suppresses exterior noise caused by rain or hail. Modern technology integrated into a modern roof tile.



Size - overall (mm)  
**1305 x 350**

Size - cover (mm)  
**1260 x 320**



Tiles per m<sup>2</sup>  
**2,47 per**

Roof cover  
**0,405 m<sup>2</sup>**



Weight per panel  
**2,10 kg**



## Easy installation

handling and cutting are easy, perfect for reroofing



Pitch  
**15°-90°**

## Stone Chip

Superb aesthetic with 100% chip coverage

## Basecoat

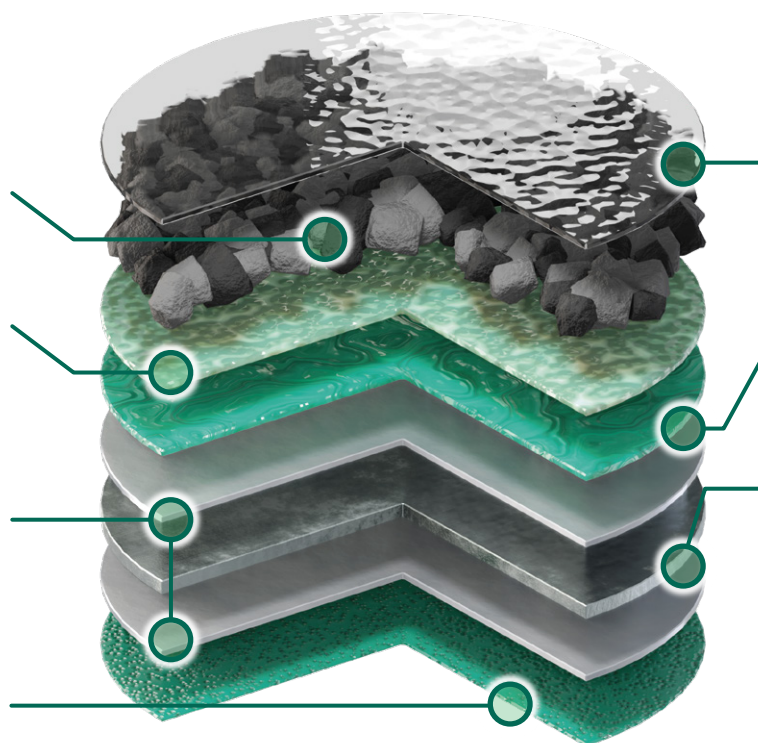
The chips are bonded with polymer acrylic coating with water and UV protection

## Zinc-Aluminium-Magnesium alloy

93,5% zinc, 3,5% aluminium, 3% magnesium

## Polyester backer

Superior corrosion resistance at the underside of the tile



## Overglaze

"Water wet" gloss and resistance to physical damage

## Polyurethane primer

Protection and corrosion resistance to the steel core

## Steel 0,50 mm

Durable, rigid, lightweight steel core

IKO Metals Europe NV

Michielenweg 3,  
3700 Tongeren, Belgium

(+32) 12 24 18 01

[info.europe@ikometals.com](mailto:info.europe@ikometals.com)

 [Metrotile.Europe](https://www.facebook.com/Metrotile.Europe)