

# MISTRAL

# Metrotile

worldwide roofing systems

## RELATED ACCESSORIES



**Angle Ridge 95**

0\_...\_AR.95



**Angle Ridge 180**

0\_...\_AR.180



**Angle Ridge 130**

0\_...\_AR.130



**End Cap AR130**

0\_...\_EC.AR.130



**End Cap AR130**

0\_...\_EC.AR.130.H135



**End Cap AR130**

0\_...\_EC.AR.130.H90



**Y-Hip**

0\_...\_AR.130.Y15-30



**Y-Hip**

0\_...\_AR.130.Y30-45



**Y-Hip 5-Way**

0\_...\_AR.130.Y5WAY



**Triple Ridge Barrel 205**

0\_...\_3RB.205



**Ridge Barrel 205**

0\_...\_1RB.205



**Triple Ridge Barrel**

0\_...\_3RB



**Ridge Barrel**

0\_...\_1RB



**Hip End Cap**

0\_...\_EC.RB.H



**Ridge End Cap**

0\_...\_EC.RB



**End Cap for Rounded Ridge**

0\_...\_EC.RB.205.R



**Round Disc**

0\_...\_EC.RB.RD



**T-Junction**

0\_...\_RB.T



**Y-Hip**

0\_...\_RB.Y15-30



0\_...\_RB.Y30-45

**Side Wall Flashing**

0\_...\_SWFL&R



**Exclusive**

0\_...\_BBC.EXL&R



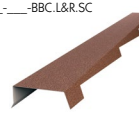
**Barge Board Cover Standard**

0\_...\_BBC.S



**Barge Board Cover SC**

0\_...\_BBC.L&R.SC



**Verge End Cap SC**

0\_...\_EC.BBC.L&R.SC



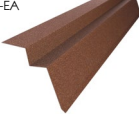
**Side Wall Flashing Standard**

0\_...\_SWFS



**Eave Apron**

0\_...\_EA



**Eave Apron P**

0\_...\_EAP



**Barge Board Cover**

0\_...\_BBC.L&R



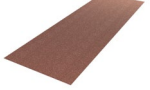
**Verge End Cap**

0\_...\_EC.BBC.L&R



**Flat Sheet**

0\_...\_FS



**Flat Sheet XL**

0\_...\_FS.XL



**Square Ridge SC**

0\_...\_SR.SC



**Square Ridge**

0\_...\_SR



**Extra Flashing**

0\_...\_EF



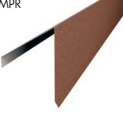
**Cover Flashing**

0\_...\_CF



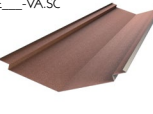
**Mono Pitch Ridge**

0\_...\_MPR



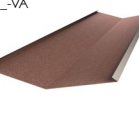
**Valley SC**

0\_...\_VA.SC



**Valley**

0\_...\_VA



**Fasteners 5 x 35 mm**

91\_...\_SCREW-35.5.G



**Nails**

91\_...\_NLS\_...



**Repair Kit**

0\_...\_RKL



**Fasteners 5 x 50 mm**

91\_...\_SCREW-50.5.G



**Roof Vent**

M\_...\_RV75



**High Vent**

M\_...\_HV110



**Roof Vent**

M\_...\_RV200



**High Vent 15-15**

M\_...\_HV15-15



**Antenna Weathering**

M\_...\_AZ16



**Inline Vent**

M\_...\_RV100



**Tube Tile**

M\_...\_TT46

